



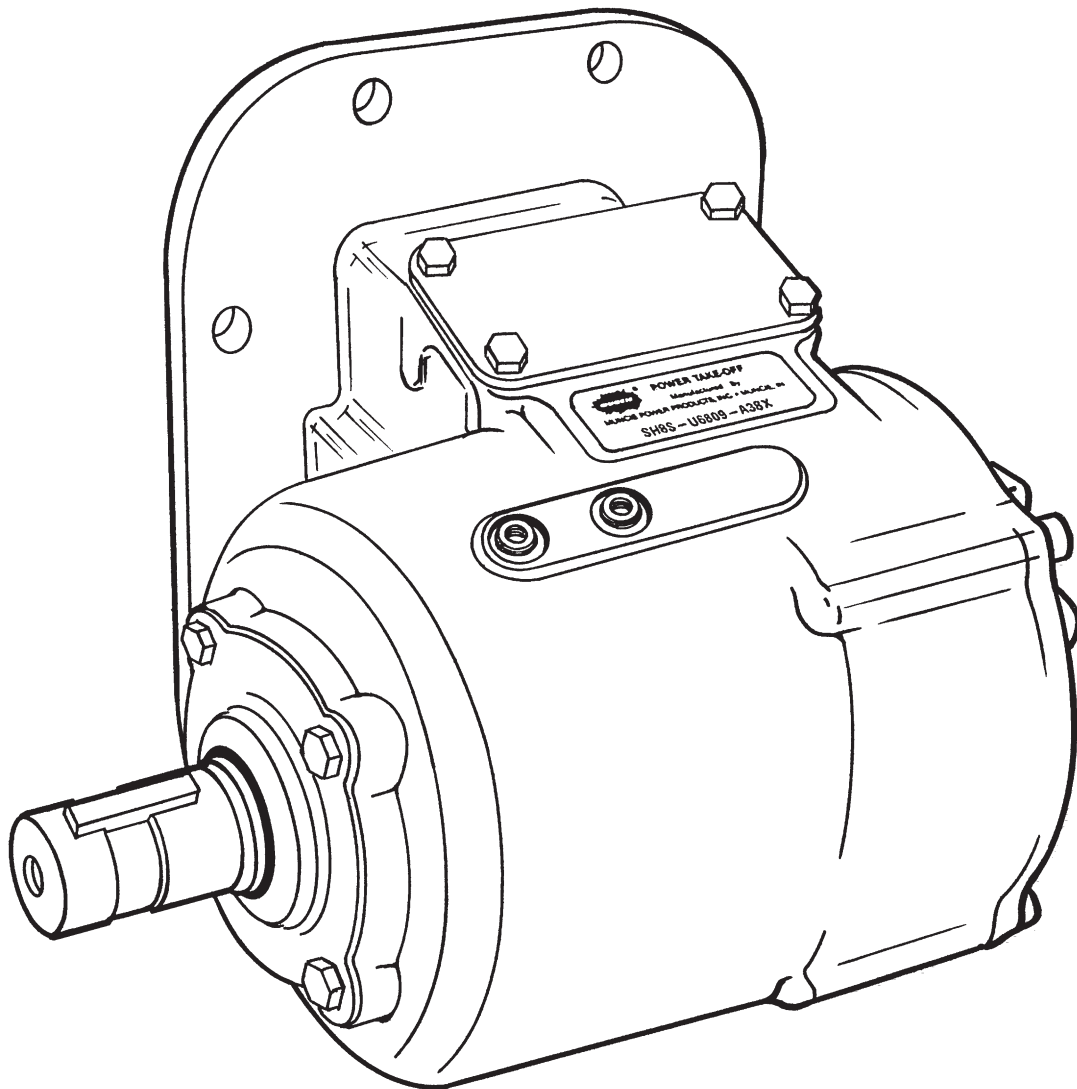
Muncie®  
Power  
Products

# SH6 & SH8 SERIES POWER TAKE-OFF

---

PARTS LIST AND SERVICE MANUAL

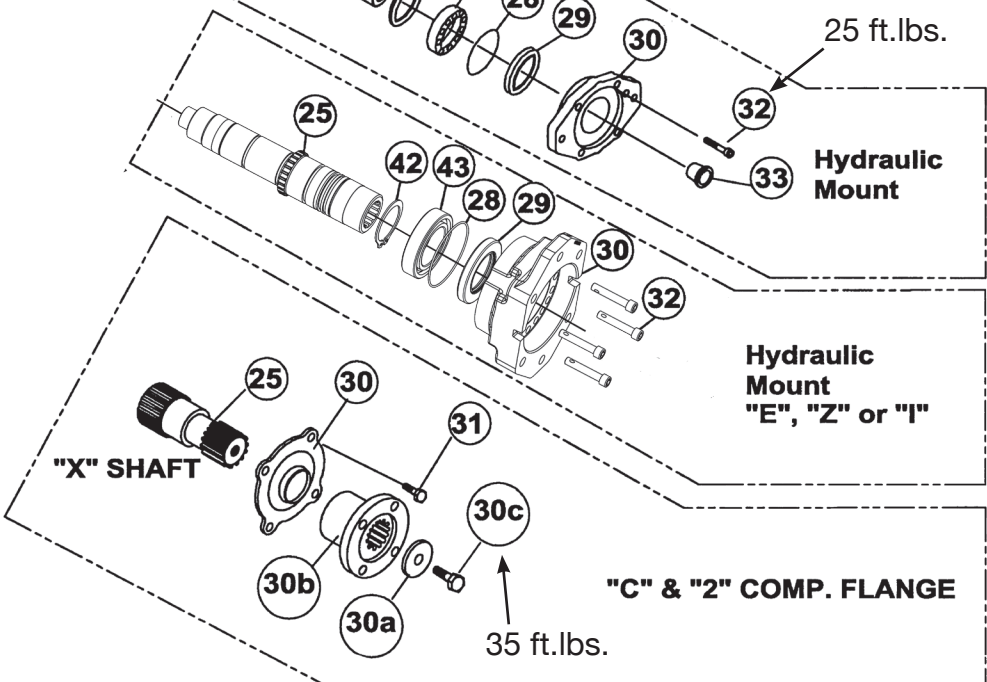
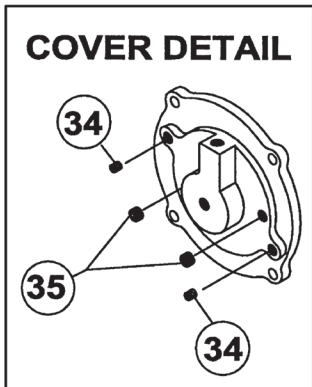
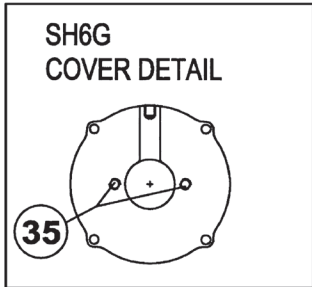
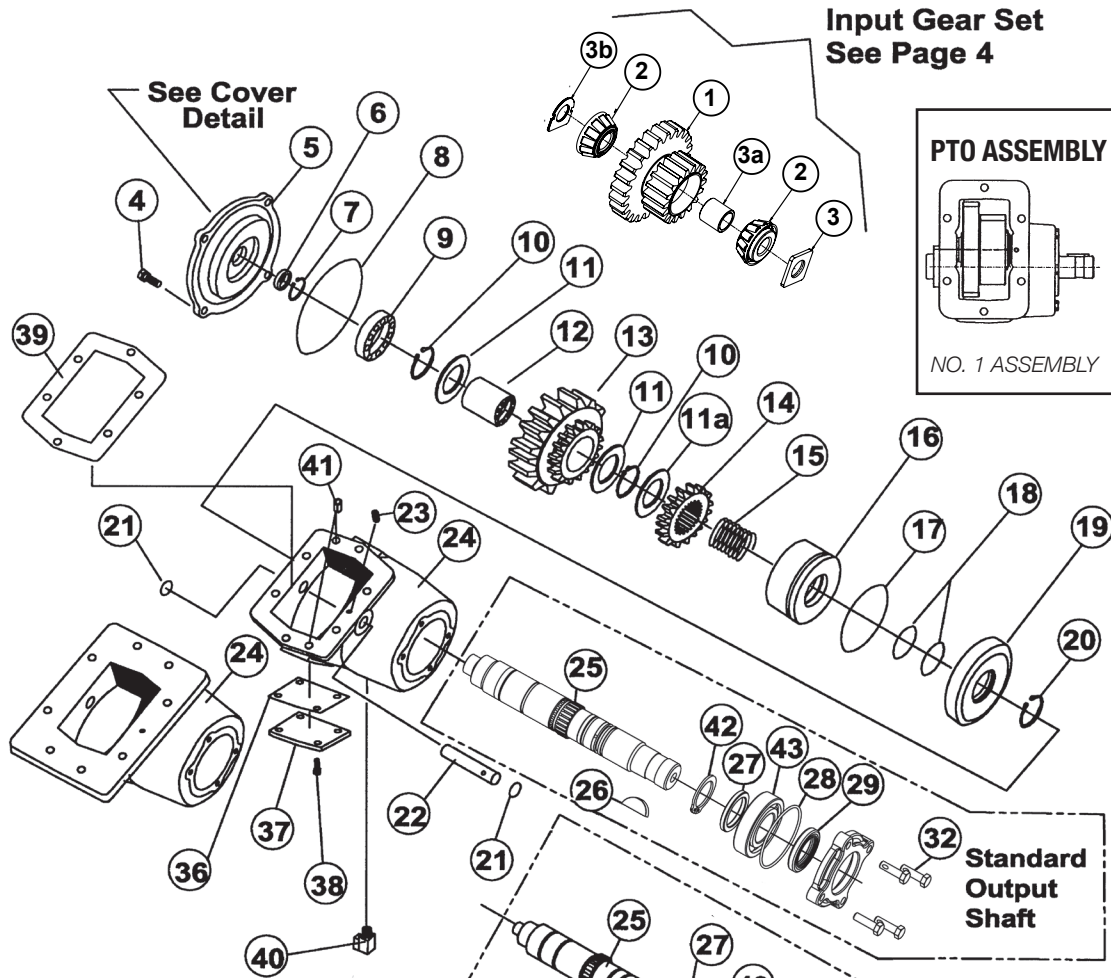
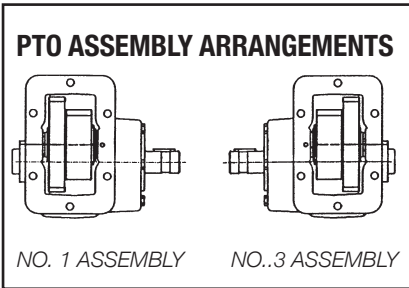
---



# SH6 & SH8 SERIES PTO

## EXPLODED VIEW

Input Gear Set  
See Page 4



# PARTS LIST AND DESCRIPTION

ITEM	QTY	PART NUMBER	DESCRIPTION	ITEM	QTY	PART NUMBER	DESCRIPTION
1	1	See Table A	Input Gear			14T35537	"K" & "P" Hyd Flange
2	2	10T35776	Bearing			14T39141	"Q" Hyd Flange
3	1	See Table B	Shim			14T35464	"S" Hyd Flange
3a	1	See Table C	Cone Spacer			14T37779	"V" Hyd Flange
3b	1	18T41452	Shim			14T38343	"Z" Hyd Flange
4	4	19T35237	Capscrew	30a	1	21T20092	Washer ("C", "2" Only)
5	1	15T36717	Cover	30b	1	14T37357	"C" Comp. Flange
	1	15T36860	Clearance Cover SH6G			14T37378	"2" Comp. Flange
6	1	11T36124	Seal	30c	1	19T38266	Capscrew "C", "2", "X"
7	1	24T36894	Snap Ring	31	4	19T41756	Hex Capscrew "B" "C" "2" "X"
8	1	12T34003	O-Ring	32	4	19T34462	Socket Capscrew "K" & "P"
9	1	10T21017	Bearing			19T39257	Socket Capscrew "G" "Q" "S"
10	2	24T35480	Snap Ring			19T96512	Socket Capscrew "I"
11	2	21T29017	Thrust Race (ALL)			19T38249	Socket Capscrew "Z"
11a	1	21T38346	Washer ("E", "Z" or "I" Output Only)			19M84478	Socket Capscrew "E"
12	1	10T36285	Bearing	33	1	25T35734	Cap Plug "G" "K" "Q" "S" "V"
13	1	02T36769	Output Gear 05 (38)				(Storage Only)
		02T36770	Output Gear 07 (33)			25T35725	Cap Plug "P"
		02T36771	Output Gear 09 (30)			25T37767	Cap Plug "I"
		02T36772	Output Gear 12 (26)			25T35936	Cap Plug "E" or "Z"
		02T36773	Output Gear 13 (24)	34	2	19T36174	Set Screw
		02T40027	Output Gear 05 (38) (2 & 4 Arrang.)	35	4	25T21684	Pipe Plug (As Needed)
		02T40028	Output Gear 07 (33) (2 & 4 Arrang.)	37	1	16T41119	Inspection Cover
		02T40029	Output Gear 09 (30) (2 & 4 Arrang.)	38	4	19T41118	Capscrew
		02T40030	Output Gear 12 (26) (2 & 4 Arrang.)	39	1	13M13541	Allison Gasket .031 (U60)
14	1	02T37707	Clutch Gear			13M35091	Gasket .010 6-Bolt
		02T38339	Clutch Gear ("E", "Z" or "I" Output Only)			13M35092	Gasket .020 6-Bolt
15	1	27T37709	Spring			13M35151	Gasket .010 8-Bolt
		27T38342	Spring ("E", "Z" or "I" Output Only)			13M35152	Gasket .020 8-Bolt
16	1	49T37708	Piston ("Z" Output, 2- & 4-Bolt)			13T62705	Gasket 8-Bolt E80
		49T40023	Piston ("C" & "P" Output, 2- & 4-Bolt)	41	2	26T37992	Dowel Pin (F84 Only)
		49T38340	Piston ("E", "Z" or "I" Output Only)	42		24T36470	(B, C, G, K, Q, S, V, 2)
17	1	12T36868	O-Ring			24T38347	Snap Ring ("E", "Z" or "I" Output Only)
		12T36867	O-Ring ("E", "Z" or "I" Output Only)	43	1	10T21017	Bearing
18	2	12T36471	O-Ring			10T38248	Bearing ("E", "Z" or "I" Output Only)
		12T36053	O-Ring ("E", "Z" or "I" Output Only)	N.S.	1	SH6-GSK	<b>Gasket Kit (Output B, C, G, K, Q, S, V, 2)</b>
19	1	49T37710	Piston Cup				<i>Includes:</i> (1)6, (1)8, (1)17, (2)18, (2)21, (1)28, (1)29, (1)36, (1)13M35091, (1)13M35092
		49T38341	Piston Cup ("E", "Z" or "I" Output Only)				<b>Gasket Kit (Output B, C, G, K, Q, S, V, 2)</b>
20	1	24T36470	Snap Ring				<i>Includes:</i> (1)6, (1)8, (1)17, (2)18, (2)21, (1)28, (1)29, (1)36, (1)13M35151, (1)13M35152
		24T36040	Snap Ring ("E", "Z" or "I" Output Only)	N.S.	1	SH8-GSK	<b>Rebuild Kit (Output B, C, G, K, Q, S, V, 2)</b>
21	2	12T35774	O-Ring				<i>Includes:</i> (1)6, (1)7, (1)8, (2)9, (2)10, (2)11, (1)12, (1)15, (1)17, (2)18, (1)20, (2)21, (1)28, (1)29, (1)36, (1)42 (1)43 (1)13M35091, (1)13M35092
22	1	07T37071	Idler Shaft				Input Bearings Included with Input Gear
23	1	19T35785	Set Screw				Sub-Ass'y sold separately.
24	1	01T42110	Housing 6-Bolt "3" Arrang				<b>Rebuild Kit (Output B, C, G, K, Q, S, V, 2)</b>
		01T42111	Housing 6-Bolt "1" Arrang				<i>Includes:</i> (1)6, (1)7, (1)8, (2)9, (2)10, (2)11, (1)12, (1)15, (1)17, (2)18, (1)20, (2)21, (1)28, (1)29, (1)36, (1)42 (1)43 (1)13M35091, (1)13M35092
		01T42185	Housing 6-Bolt "3" (F84 input)				Input Bearings Included with Input Gear
		01T42184	Housing 6-Bolt "1" (F84 input)				Sub-Ass'y sold separately.
		01T37017	Housing 6-Bolt (N) "1" Arrng	N.S.	1	SH8-RBK-A	<b>Rebuild Kit (Output B, C, G, K, Q, S, V, 2)</b>
		01T37106	Housing 6-Bolt (N) "3" Arrng				<i>Includes:</i> (1)6, (1)7, (1)8, (2)9, (2)10, (2)11, (1)12, (1)15, (1)17, (2)18, (1)20, (2)21, (1)28, (1)29, (1)36, (1)42 (1)43, (1)13M35151, (1)13M35152
		01T42183	Housing 8-Bolt "3" Arrang				Input Bearings Included with Input Gear
		01T42182	Housing 8-Bolt "1" Arrang				Sub-Ass'y sold separately.
		01T42180	Housing 6-Bolt "3" ("I" & "Z" Hyd)				<b>Gasket Kit (Output E, I, Z)</b>
		01T42181	Housing 6-Bolt "1" ("I" & "Z" Hyd)				<i>Includes:</i> (1)6, (1)8, (1)17, (2)18, (2)21, (1)28, (1)29, (1)36, (1)42 (1)43, (1)13M35091, (1)13M35092
		01T42186	Housing 8-Bolt "3" ("I" & "Z" Hyd)	N.S.	1	SH6-GSK-2	<b>Gasket Kit (Output E, I, Z)</b>
		01T42187	Housing 8-Bolt "1" ("I" & "Z" Hyd)				<i>Includes:</i> (1)6, (1)8, (1)17, (2)18, (2)21, (1)28, (1)29, (1)36, (1)42 (1)43, (1)13M35151, (1)13M35152
	#	01T42188	Housing 8-Bolt "1" ("E" Hyd)				Input Bearings Included with Input Gear
	#	01T42189	Housing 8-Bolt "3" ("E" Hyd)				Sub-Ass'y sold separately.
	#	01T42813	Housing 6-Bolt "1" ("E" Hyd)	N.S.	1	SH8-GSK-2	<b>Gasket Kit (Output E, I, Z)</b>
	#	01T42721	Housing 6-Bolt "3" ("E" Hyd)				<i>Includes:</i> (1)6, (1)8, (1)17, (2)18, (2)21, (1)28, (1)29, (1)36, (1)13M35151, (1)13M35152
25	1	06T36892	Output Shaft "B"				<b>Rebuild Kit (Output E, I, Z)</b>
		06T37372	Output Shaft "C" "2" "X"				<i>Includes:</i> (1)6, (1)7, (1)8, (1)9, (2)10, (2)11, (1)11a, (1)12, (1)15, (1)17, (2)18, (1)20, (2)21, (1)28, (1)29, (1)36, (1)42, (1)43, (1)13M35091, (1)13M35092
		06T38718	Output Shaft "E"				Input Bearings Included with Input Gear
		06T37088	Output Shaft "G" Dana Special				Sub-Ass'y sold separately.
		06T38355	Output Shaft "I"				<b>Rebuild Kit (Output E, I, Z)</b>
		06T36893	Output Shaft "K"				<i>Includes:</i> (1)6, (1)7, (1)8, (1)9, (2)10, (2)11, (1)11a, (1)12, (1)15, (1)17, (2)18, (1)20, (2)21, (1)28, (1)29, (1)36, (1)42 (1)43, (1)13M35091, (1)13M35152
		06T37089	Output Shaft "P"				Input Bearings Included with Input Gear
		06T37090	Output Shaft "Q" "S"	N.S.	1	SH8-RBK-A2	Sub-Ass'y Sold Separately.
		06T37336	Output Shaft "T"				<b>Rebuild Kit (Output E, I, Z)</b>
		06T38345	Output Shaft "Z"				<i>Includes:</i> (1)6, (1)7, (1)8, (1)9, (2)10, (2)11, (1)11a, (1)12, (1)15, (1)17, (2)18, (1)20, (2)21, (1)28, (1)29, (1)36, (1)42 (1)43, (1)13M35151, (1)13M35152
		06T37167	Output Shaft "B" (SH6G)				Input Bearings Included with Input Gear
		06T37168	Output Shaft "K" (SH6G)				Sub-Ass'y Sold Separately.
		06T40014	Output Shaft "C" (2&4 Ass'y.)				
		06T40017	Output Shaft "P" (2&4 Ass'y.)				
		06T40020	Output Shaft "Z" (2&4 Ass'y.)				
26	1	26T01627	Woodruff Key				
27	1	28T62371	Hyd. Flange Spacer ("K", "Q", "S", "P", "B", "C", "G", "V", "2") (Not Used With "E", "I" or "Z")				
28	1	12T36751	O-Ring				
		12T38344	O-Ring ("E" "I" or "Z" Output Only)				
29	1	11T37790	Output Shaft Seal (Std)				
		11T37795	Shaft Seal ("E" "I" or "Z" Output)				
30	1	15T41683	"B" Bearing Cap				
		14T38719	"E" Hyd Flange				
		14T38354	"I" Hyd Flange				
		14T39137	"G" Hyd Flange				

**SUB-ASSEMBLIES USED IN PACKAGING OF PTO**  
**48TK3991 Shift Option Code "A" Manual Air Valve Type. Includes:**

1	20MK8800	Stud Kit
1	48TK3926	12v Manual Air
1	45M44430	Tubing 30 Ft.
1	36MK3841	Safety Labels

**48TK3961 Shift Option Code "E" Electric/Air 12vdc. Includes:**

1	20MK8800	Stud Kit
1	48TK3958	SH6/8 12vdc "E"
1	45M44430	Tubing 30 Ft.
1	36MK3841	Safety Labels

# MODEL NUMBER CONSTRUCTION

## SH 6S-M65 07 E 1 B X

### PTO Type

SH

### Mounting

SAE 6-Bolt Std. Mount	- 6S
SAE 6-Bolt Std. - Metric	- 6B
SAE 6-Bolt Deep - Metric	- 6C
SAE 6-Bolt Deep Mount	- 6D
SAE 6-Bolt w/Clearance Cover	- 6G
SAE 6-Bolt Deep Mount w/o Stud Kit	- 6K
SAE 6-Bolt Std. Mount w/o Stud Kit	- 6L
SAE 6-Bolt Non-Std. Mtg. (Jatco)	- 6N
SAE 8-Bolt Std. Mount	- 8S
SAE 8-Bolt Std. - Metric	- 8B
SAE 8-Bolt Deep - Metric	- 8C
SAE 8-Bolt Deep Mount	- 8D
SAE 8-Bolt Endurant/Paccar	- 8F
SAE 8-Bolt w/Clearance Cover	- 8G
SAE 8-Bolt Deep Mount w/o Stud Kit	- 8K
SAE 8-Bolt Std. Mount w/o Stud Kit	- 8L

### Trans. SH Gear Data

Eaton /Paccar	8.048P 20PA 28.9 RH	- E80
Fuller	6.35P 20°PA 22 LH	- F63
Fuller	6.65P 20°PA 21.5 LH	- F66
Fuller	7.0P 23°PA 21.5 LH	- F79
Mack	6.48P 17.5°PA Spur	- M65
Spicer/Tremec	6P 17.5°PA 26.17° LH	- S60
Spicer/Tremec	7P 17.5°PA 26.07° LH	- S70
Universal	6P 20°PA Spur	- U60
Universal	6P or 6/8P 20°PA Spur	- U68
Universal	6 or 6/8P 20°PA Spur	- S68

### Speed Ratio

05	- .47:1	12	- 1.15:1
07	- .70:1	13	- 1.33:1 (8-Bolt Only)
09	- .87:1		

### Special Features

- X - None
- P - Pressure Lube
- R - Pulse Generator/No Pressure
- S - Pulse Generator/Pressure Lube

### Output Types

- B - 1¼ Round 5/16 KW
- C - 1410 Companion Flange
- E - SAE "C" 2 & 4 Bolt
- I - DIN 5462
- K - SAE "B" 2- & 4-Bolt
- P - SAE "BB" 2- & 4-Bolt
- Q - SAE "A" 2-Bolt
- S - SAE "B" 2-Bolt
- T - ¾ 11 Spline
- X - 1.3-20T Spline
- Z - SAE "B" w/1¼ - 14T Shaft 2
- 2 - DIN Companion Flange

### Assembly Arrangement

- 1 or 3 (see page 2)

### Shifter Type

- A - Manual Air
- E - Electric/Air (12 Volt)
- F - Electric/Air (24 Volt)
- K - Manual Air (24 Volt)
- M - Constant Mesh
- P - Manual Air (Less Installation Kit)

**TABLE A - ITEM #1 INPUT GEAR** *Service Parts Sold as Sub-Ass'y Only*

SUB-ASS'Y	INPUT GEAR	DESCRIPTION (#T)
03TA6348	03T63302	Input Gear E8007 (32/23)
03TA6349	03T63314	Input Gear E8009 (32/28)
03TA6350	03T63318	Input Gear E8012 (32/30)
03TA4712	03T37086	Input Gear F6307 (24/23)
03TA4713	03T38356	Input Gear F6309 (24/26)
03TA4700	03T37087	Input Gear F6312 (24/30)
03TA4701	03T38502	Input Gear F6607 (24/23)
03TA4702	03T38503	Input Gear F6609 (24/26)
03TA4703	03T38504	Input Gear F6612 (24/30)
03TA4704	03T38195	Input Gear F7005 (26/18)
03TA4705	03T38194	Input Gear F7007 (26/23)
03TA4568	03T37070	Input Gear M6505 (26/18)
03TA4569	03T37058	Input Gear M6507 (26/23)
03TA4570	03T37059	Input Gear M6509 (26/26)
03TA4571	03T37060	Input Gear M6512 (26/30)
03TA4573	03T37062	Input Gear S6807 (26/23)
03TA4574	03T37063	Input Gear S6809 (26/26)
03TA4575	03T37064	Input Gear S6812 (26/30)
03TA4576	03T37158	Input Gear S6813 (26/32)
03TA4706	03T37134	Input Gear S7109 (29/26)
03TA4580	03T37069	Input Gear U6005 (24/18)
03TA4581	03T37038	Input Gear U6807 (24/23)
03TA4582	03T37039	Input Gear U6809 (24/26)
03TA4583	03T37040	Input Gear U6812 (24/30)
03TA4584	03T37041	Input Gear U6813 (24/32)

*Sub-Ass'y includes: Input Gear, measured cone spacer, input bearings.  
Requires input gear shim item #3 (Table B) for proper installation, purchase Shim Kit 18TK4586 sold separately.*

*\*\*\* Requires Bearings (Item 10T35776), Bearing Shim (Item 3) and Cone Spacer (Item 3a). Order with replacement gear.*

**TABLE B - ITEM #3 BEARING SHIM**

SHIM	DESCRIPTION	NOMINAL	TOLERANCE
18T41437	Bearing Shim	0.114	0.1150 / 0.1130
18T41438	Bearing Shim	0.116	0.1175 / 0.1155
18T41439	Bearing Shim	0.119	0.1200 / 0.1180
18T41440	Bearing Shim	0.121	0.1225 / 0.1205
18T41441	Bearing Shim	0.124	0.1250 / 0.1230
18T41442	Bearing Shim	0.126	0.1275 / 0.1255
18T41443	Bearing Shim	0.129	0.1300 / 0.1280
18T41444	Bearing Shim	0.131	0.1325 / 0.1305
18T41445	Bearing Shim	0.134	0.1350 / 0.1330
18T41446	Bearing Shim	0.136	0.1375 / 0.1355
18T41447	Bearing Shim	0.139	0.1400 / 0.1380
18T41448	Bearing Shim	0.141	0.1425 / 0.1405
18T41449	Bearing Shim	0.144	0.1450 / 0.1430
18T41450	Bearing Shim	0.146	0.1475 / 0.1455
18T41451	Bearing Shim	0.149	0.1500 / 0.1480

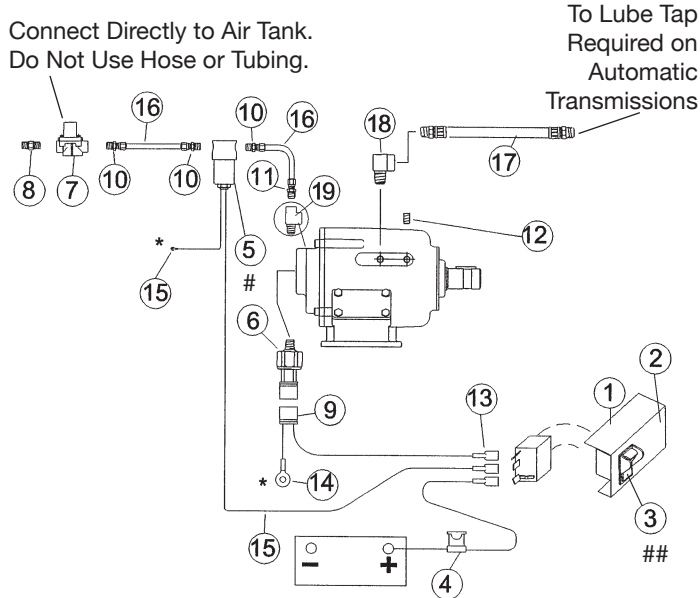
*Shim Kit 18TK5233 (Include 1 each of every item #3 shim)*

**TABLE C - ITEM #3A CONE SPACER**

SPACER	DESCRIPTION	DIMENSION
18T38640	Cone Spacer	0.983 / 0.981
18T38641	Cone Spacer	0.980 / 0.978
18T38642	Cone Spacer	0.977 / 0.975
18T38643	Cone Spacer	0.974 / 0.972
18T38644	Cone Spacer	0.971 / 0.969
18T38635	Cone Spacer	0.998 / 0.996
18T38636	Cone Spacer	0.995 / 0.993
18T38637	Cone Spacer	0.992 / 0.990
18T38638	Cone Spacer	0.989 / 0.987
18T38639	Cone Spacer	0.986 / 0.984
18T38645	Cone Spacer	0.968 / 0.966
18T38646	Cone Spacer	0.965 / 0.963
18T38647	Cone Spacer	0.962 / 0.960
18T38648	Cone Spacer	0.959 / 0.957
18T38649	Cone Spacer	0.956 / 0.954

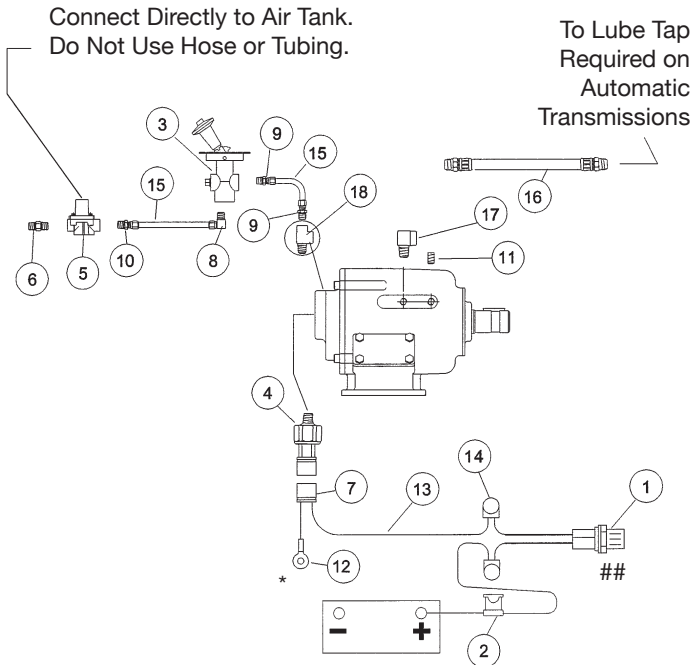
# SH6 & SH8 INSTALLATION KITS

## SH SERIES ELECTRIC/AIR SHIFT SYSTEM KIT NO. 48TK3958 12V ELECTRIC AIR SHIFT



ITEM	QTY	PART NO.	DESCRIPTION
1	1	36MA1005	Switch Bracket
2	1	36M01007	Face Plate
3	1	30T35687	Rocker Switch 12v
4	1	33T36299	Fuse Assembly
5	1	35M30692	Solenoid Valve 12v
6	1	30T60228	Pressure Switch
7	1	31M15759	Pressure Protection Valve
8	1	44MB2164	Pipe Nipple
9	1	34T36941	Wiring Pigtail
10	3	44MB6844	Male Connector
11	1	44MB6842	Male Connector
12	1	25T21684	Pipe Plug (Use as Req.)
13	3	34M18250	Female Spade Connector
14	2	34M18009	Ring Terminal
15	1	37T42512	Electric Wire 12 Ft.
18	1	43T37385	Orifice Fitting ("P" Special Option)
<b>Parts Included with PTO (Not packaged in Kit No. 48TK3958)</b>			
16	1	45M44430	Air Tubing 30 Ft.
19	1	44MB2252	Street Tee
<b>Parts Included with PTO ("P" Special Option)</b>			
17	1	45M4R536	Lube Hose Ass'y ("P" Special Option)
<b>For 24V Electric/Air Kit No. 48TK3959, Substitute:</b>			
3	1	30T35712	Rocker Switch 24v
5	1	35M31692	Solenoid Valve 24v

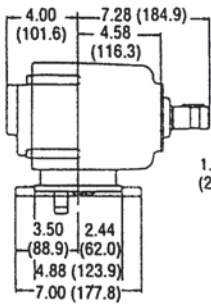
## SH SERIES MANUAL SHIFT SYSTEM KIT NO. 48TK3926 MANUAL AIR SHIFT - 12V LIGHT



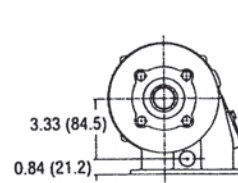
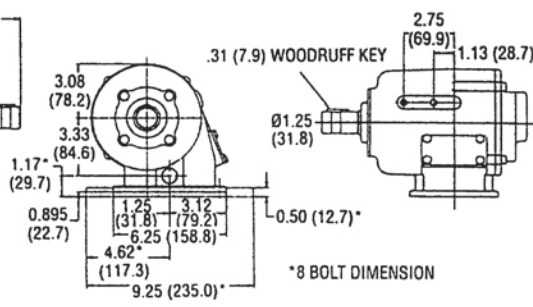
ITEM	QTY	PART NO.	DESCRIPTION
1	1	32M12001	Light Assembly 12v
2	1	33T36299	Fuse Assembly
3	1	35M18653	Air Valve
4	1	30T60228	Pressure Switch
5	1	31M15759	Pressure Protection Valve
6	1	44MB2164	Pipe Nipple
7	1	34T36941	Wiring Pigtail
8	1	44MB6942	Fitting - Elbow
9	2	44MB6842	Male Connector
10	1	44MB6844	Male Connector
11	1	25T21684	Pipe Plug
12	2	34M18009	Ring Terminal
13	1	37T42512	Electric Wire 12 Ft.
14	3	34T36362	Closed End Crimp
N.S.	1	36MA1004	Dash Bracket
N.S.	1	36M01005	Face Plate
N.S.	1	36MK1007	Bolt Kit
17	1	43T37385	Orifice Fitting ("P" Special Option)
<b>Parts Included with PTO (Not packaged in Kit No. 48TK3926)</b>			
15	1	45M44430	Air Tubing 30 Ft.
18	1	44MB2252	Street Tee
<b>Parts Included with PTO ("P" Special Option)</b>			
16	1	45M4R536	Lube Hose Ass'y ("P" Special Option)
<b>For 24V Manual Air Kit No. 48TK3929, Substitute:</b>			
1	1	32M24001	Light Assembly 24v



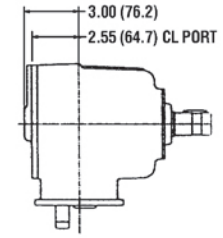
# SH6 & SH8 DIMENSIONS IN INCHES (MM)



SH6/8S HOUSING DIMENSION

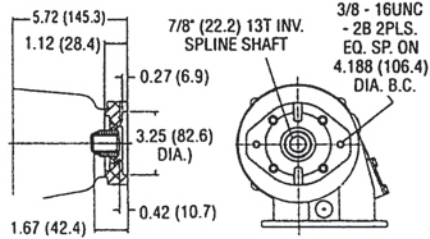


SH6N HOUSING DIMENSION

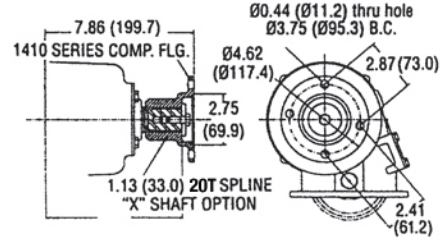


SH6G HOUSING OPTION "B" OR "K" SHAFT ONLY.

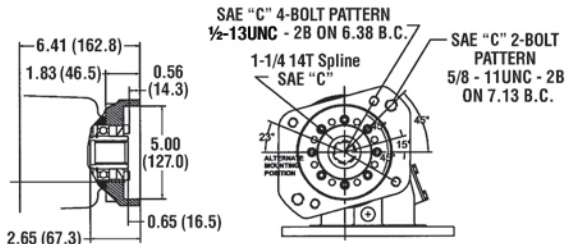
## STANDARD 1/4" ROUND KEYED SHAFT ("B" OPTION)



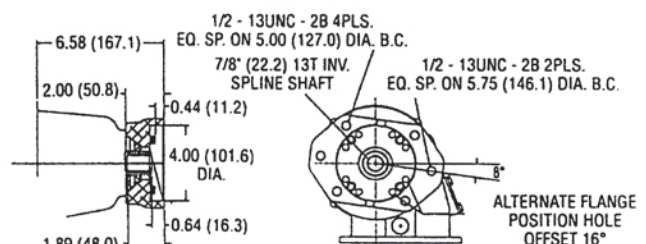
SAE "A" 2-BOLT 7/8" - 13 SPLINE ("Q" OPTION)



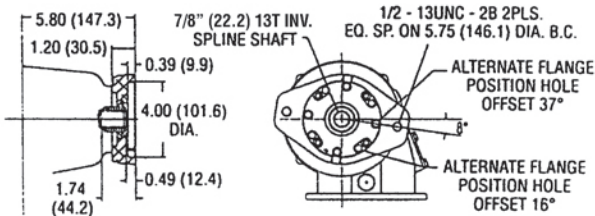
1410 SERIES COMPANION FLANGE ("C" OPTION)



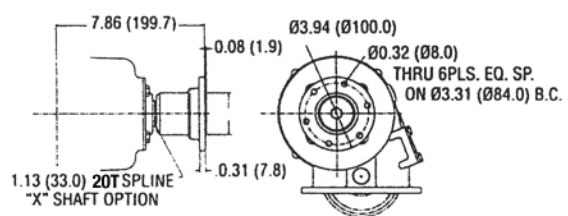
SAE "C" 2- & 4-BOLT 1 1/4" - 14 SPLINE ("E" OPTION)



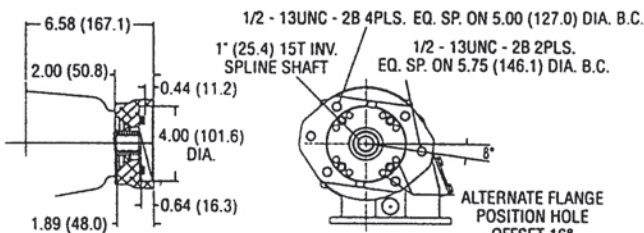
SAE "B" 2- & 4-BOLT 7/8" - 13 SPLINE ("K" OPTION)



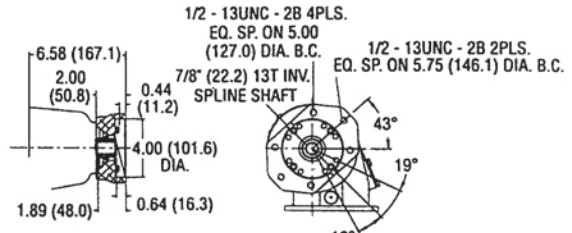
SAE "B" 2-BOLT 7/8" - 13 SPLINE ("S" OPTION)



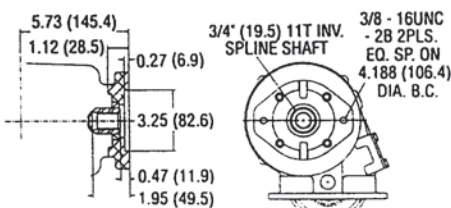
DIN 100 COMPANION ("2" OPTION)



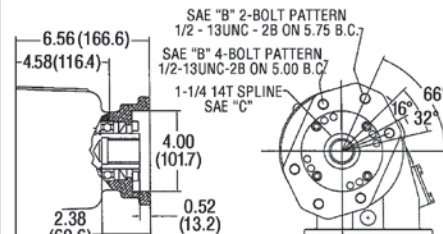
SAE "B-B" 2- & 4-BOLT 1" - 15 SPLINE ("P" OPTION)



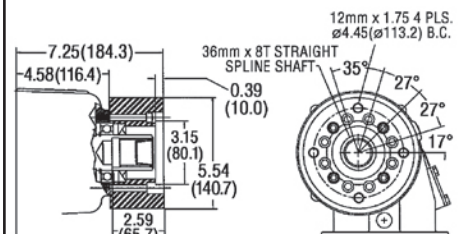
SAE "B" 2- & 4-BOLT 7/8" - 12 SPLINE ("V" OPTION)



SAE "A" 2-BOLT 3/4" - 11 SPLINE ("T" OPTION)



SAE "B" FLANGE W/SAE "C" SHAFT ("Z" OPTION)



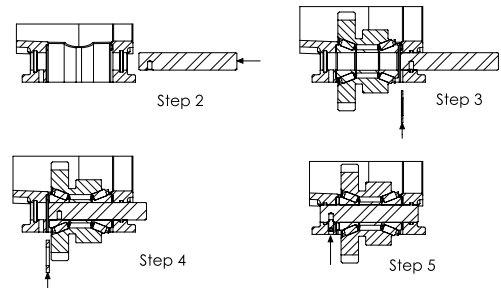
DIN 5462 36MM - 8 SPLINE ("I" OPTION)

# SH6 & SH8 ASSEMBLY INSTRUCTIONS

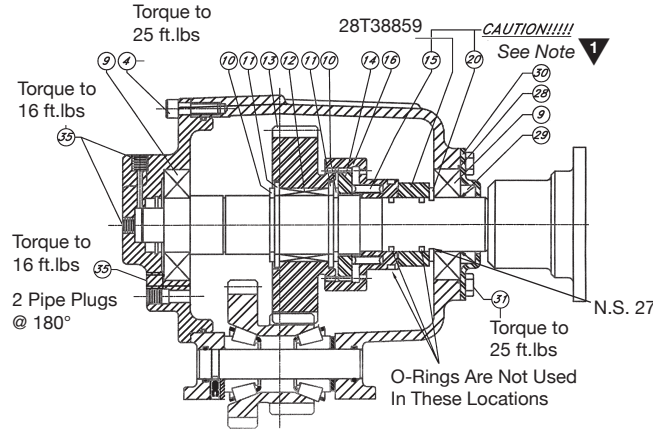
## FOR PROPER INSTALLATION AND ADJUSTMENT OF THE TAPERED INPUT BEARINGS

The input gear must be purchased as a kit which includes the input gear, bearings and bearing (cone) spacer. This must remain as a group and not interchanged with any other gears.

1. Lubricate bearings and races with lithium based bearing grease.
2. Start the idler shaft into the housing, opposite the set screw, ensuring the set screw hole in the shaft will line up with the PTO housing set screw once shaft is in position.
3. Place gear set into housing. Gear, bearing, and bearing (cone) spacer must remain together. Tap the idler shaft into the housing far enough to place shim 18T41452 on shaft.
4. Tap the idler shaft through the gear set, leaving enough room to place the second shim on the shaft on the other side of the gear set. Select a shim that is force fit and tap shim into place.
5. Tap the idler shaft the remainder of the way into the housing and install set screw, ensuring it lines up with the set screw hole in the shaft.



*Note the location of the Shim in Step #4 is on the opposite side of the gear than the set screw.*



## CONSTANT MESH OPTION

### 1 CAUTION: WHEN ASSEMBLING OR DISASSEMBLING THESE PARTS!!!

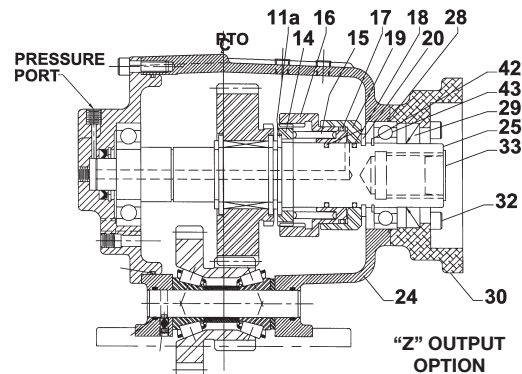
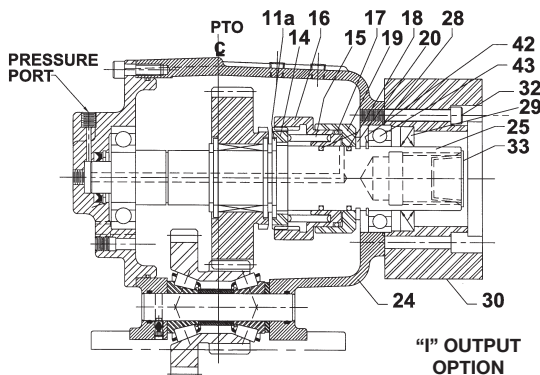
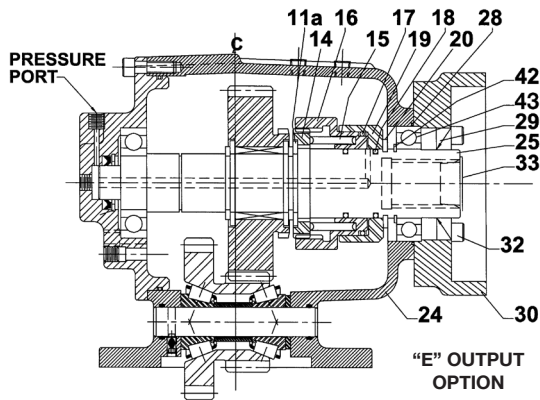
Approximately 130 lbs. force is required to compress spring (Item 15) and install spacer (Item 28T38859) and snap ring (Item 20) on shaft (Item 32).

The Constant Mesh version of the SH Series is accomplished by inserting a spacer, P.N. 38T38859, in place of the piston cup. Disassemble the SH Series output shaft assembly and remove the piston cup and O-Rings and assemble the unit as shown above.

Plug all pip ports with appropriate plugs before installing unit.

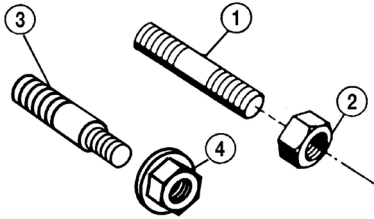
### Assemblies with "E", "I" or "Z" Output Option

ITEM	QTY	PART NO.	DESCRIPTION
11A	1	21T38346	Washer
14	1	02T38339	Gear, Clutch
15	1	27T38342	Spring
16	1	49T38340	Piston
17	1	12T36867	O-Ring
18	2	12T36053	O-Ring
19	1	49T38341	Piston Cup
20	1	24T36040	Snap Ring
24	1	See Pg. 3	Housing
25	1	06T38355	Shaft "I"
	1	06T38345	Shaft "Z"
	1	06T38718	Shaft "E"
28	1	12T38344	O-Ring
29	1	11T37795	Seal
30	1	14T38354	Adapter "I"
	1	14T38343	Adapter "Z"
	1	14T38719	Adapter "E"
32	4	19T96512	Cap Screw "I"
	4	19T38249	Cap Screw "Z"
	8	19M84478	Cap Screw "E"
33	1	25T37767	Caplug "I"
	1	25T35936	Caplug "E" "Z"
41	1	24T38347	Snap Ring
43	1	10T38248	Bearing



# MOUNTING KITS

## 6-BOLT MOUNTING KIT



20TK4418 STANDARD (SH6S, SH6D)			
ITEM	QTY	PART NO.	DESCRIPTION
1	4	20M38150	Stud
2	4	22T39282	NUT
3	2	20T37032	Step-Stud
4	2	22T37605	Lock Nut
N.S.	1	MC00-02	Instruction Card

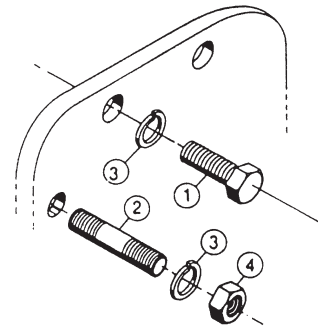
20TK4359 METRIC (SH6B, SH6C)			
ITEM	QTY	PART NO.	DESCRIPTION
1	4	20M39040	Stud
2	4	22T39282	Nut
3	2	20T37952	Step-Stud
4	2	20T37605	Lock Nut
N.S.	1	MC00-02	Instruction Card

20TK4360 METRIC (SH6B, A6907)			
ITEM	QTY	PART NO.	DESCRIPTION
1	4	20M39045	Stud
2	4	22T39282	Nut
3	2	20T38391	Step-Stud
4	2	22T37605	Lock Nut
N.S.	1	MC00-02	Instruction Card

20TK4440 METRIC (SH6B, I84)			
ITEM	QTY	PART NO.	DESCRIPTION
1	4	20T38143	Stud
2	4	22T39282	Nut
3	2	20T38582	Step-Stud
4	2	22T37605	Lock Nut
N.S.	1	MC00-02	Instruction Card

20TK4046 METRIC (SH6F, F84)			
ITEM	QTY	PART NO.	DESCRIPTION
1	4	20T38143	Stud
2	4	22T39282	Nut
3	2	20T38582	Step-Stud
4	2	22T37605	Lock Nut
N.S.	1	MC00-02	Instruction Card

## 8-BOLT MOUNTING KIT

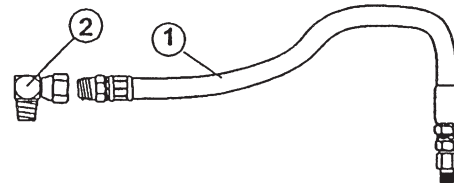


20MK8800 STANDARD (SH8S, SH8D)			
ITEM	QTY	PART NO.	DESCRIPTION
1	6	19M44138	Capscrew
2	2	20M44175	Stud
3	8	21MI4375	Lockwasher
4	2	22MX4420	Nut

20MKM801 METRIC (SH8B, SH8D)			
ITEM	QTY	PART NO.	DESCRIPTION
2	8	20M47050	Stud
3	8	21ML4375	Lockwasher
4	8	22MX4420	Nut

20TK6221 METRIC (SH8F-E80)			
ITEM	QTY	PART NO.	DESCRIPTION
2	8	20TK63078	Metric Stud
3	8	21ML4375	Lockwasher
4	8	22MX4420	Nut

## LUBE HOSE KIT



43TK3934 HOSE KIT (STANDARD)			
ITEM	QTY	PART NO.	DESCRIPTION
1	1	45M4R536	Hose Assembly Std.
2	1	43M05522	Elbow

## SH6 & SH8 SERIES PTO

The SH6 & SH8 Series PTO offers several output shaft choices to accommodate popular pump assemblies. The compact size and high torque capability of the SH PTO permits direct mounting pumps which previously required remote mount. The SH Series PTO is available with pulse generator pick-up (Kit # 16TK3833) for use with the Muncie digital tachometer 38MK2000 (request MP92-04). Contact your Muncie Application Specialist for assistance with this option.